

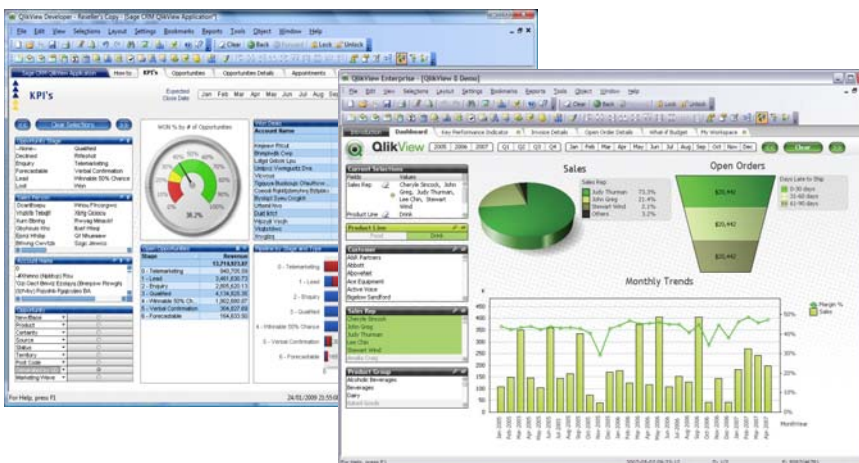
QlikView Analysis & Reporting for Sage 200

Simplifying Analysis for Everyone

FD Systems has teamed up with QlikView, the fastest growing business intelligence platform in the world, to deliver a new class of easy-to use, fast and flexible business analysis solutions. Designed to empower your business and its users to analyse and report on the core data in your Sage 200 system our QlikView Starter Pack will have you analysing and reporting on your data within days, not weeks or months.

Whether you solely use Sage 200 or you use other databases in addition to your Sage system, our starter pack is designed to give you the key information you require at a cost that makes ROI easy to calculate and justify.

In a rapidly changing business world knowing how to react quickly and make informed decisions is essential to keep you ahead of the competition. With its visually interactive analysis, QlikView for Sage 200 makes analysing your key data simple and with our set of pre-defined reports for Sage 200 you can begin reporting immediately. Alternatively our team of consultants can work with you to develop a set of reports that give you the exact information your business wants to view.



“ QlikView offers hundreds of possible chart and table types and varieties; there are list boxes for navigating dimensions, statistics boxes and many other UI elements. Every UI element can be clicked on to query and explore the data. With a visually interactive user interface, QlikView is not only easy-to-learn but also easy-to-use and allows the user to gain a deeper understanding of the data. ”

As your requirements for reporting and analysis grow so can your QlikView solution capitalising on the initial investment made. Your QlikView Starter Pack can be upgraded to the Server solution and all of the reports and applications that you have developed over time will work just as before, making QlikView the ideal solution for your reporting and analytical needs both now and in the future.

Evaluating QlikView is risk free. With our 14 day free trial you can test drive a version of QlikView against your own data today.

QlikView Starter Pack for Sage 200

£3,995

including 1x Developer Licence, and 5x Analyser Licences

Services 4 days recommended and charged in addition to the pack above. These will incorporate ½ day installation, ½ day scoping, 2 days QlikView application writing and 1 day basic training.

Support £900 per annum

Want to know more?

Call **0870 873 4387** or email us at **info@fdsystems.co.uk**