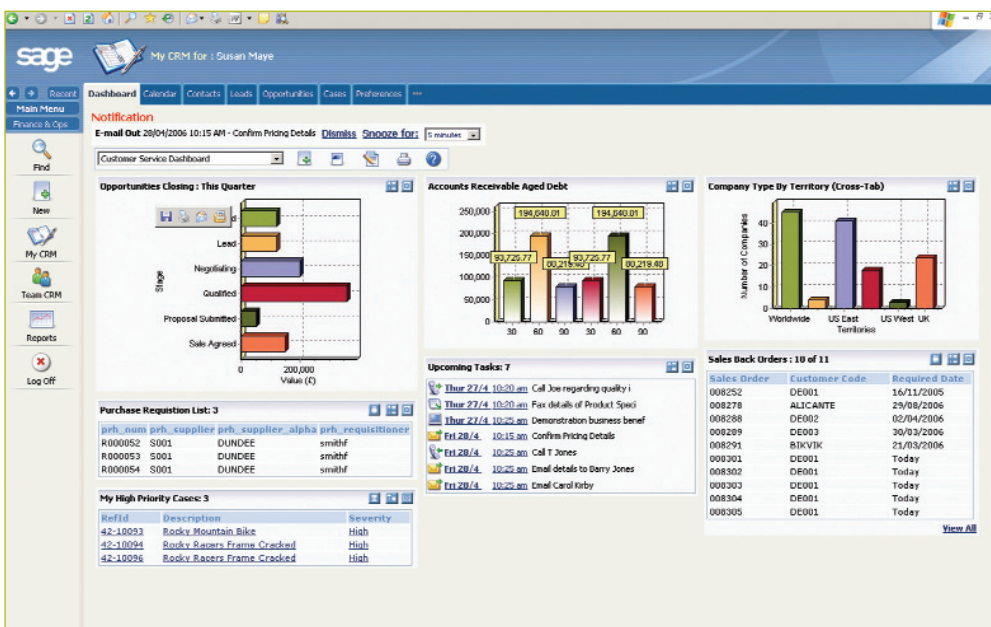


Sage 1000 is a new, single business management software application designed to span operations across mid-sized businesses. It includes an enormous breadth and depth of functionality, based on the business logic developed over many years in the Sage Line 500 and Sage CRM products – plus delivering major productivity benefits through hugely powerful workflow, dashboards, customisation and customer self-service features.

By employing a single system across all areas of the business, staff are empowered to provide customers with accurate, up-to-date and timely information that avoids frustration and helps to foster long-term loyalty. Ultimately this translates back into consistently high service levels with increased margins.



The Sage 1000 user interface allows for the instant creation and customisation of dashboards for individual users and roles.

Sage 1000 represents a great opportunity for you to move your Sage business management system forward:

- Utilises proven, stable Sage business logic and technology**
 Built on the business logic of Sage Line 500 and Sage CRM, Sage 1000 delivers huge depth of functionality across finance, payroll, customer and supplier management, and many other operations.
- Quick and easy customisation**
 The system can be quickly customised with new fields, role-based access to appropriate information and dashboards tailored to the individual's needs. Additionally there are toolsets to allow the integration of a wide range of third-party software and hardware options.
- One web-based interface for the whole application**
 The same attractive, customisable thin client interface is used throughout the system, making for easier deployment and lower training costs; Sage 1000 also provides customer self-service options allowing you to offer better service and cut costs.
- Workflow and alerting tools available across multiple business areas**
 Processes can be defined so that workflow across the business is reflected in the software.
- Comprehensive reporting and dashboard tools out of the box**
 Key management information from throughout your operation is available at your fingertips, without the need for data mapping or advanced reporting skills.
- Deep level of expertise in the Sage Business Partner channel**
 Sage Business Partners are already well-skilled in the technology that drives Sage 1000.

A complete, single business management solution

Spanning business operations across your entire organisation, Sage 1000 helps you achieve true customer focus, from targeting prospects right through to order fulfilment and after-care service.



As an existing Sage Line 500 customer, there are attractive **trade-up options** available to you, should you wish to move up to the Sage 1000 platform.

To find out more about Sage 1000, please contact your Sage Business Partner or call the Sage Customer Account Management team on **0845 111 9988** selecting option 1.

Sage (UK) Limited
North Park
Newcastle upon Tyne,
NE13 9AA

Tel 0845 111 9988
Fax 0845 245 0297
www.sage.co.uk

POWER TO RUN YOUR BUSINESS

sage